

## Informative Note: 28-900 - 1

### Parallel Generators

---

This informational sheet is designed to help you to install parallel generators for your installation.

Every effort has been made to ensure the accuracy of the information being provided. However, in the event of a discrepancy between this informative note and the governing Manitoba Electrical Code, The Manitoba Electrical Code shall take precedence.

Remember, the Manitoba Electrical Code is constantly being updated. Be sure to familiarize yourself with the latest code requirements before you begin your installation.

The installation of parallel generators is not addressed in the Canadian Electrical Code. Manitoba Hydro has put an inspection notice out to allow the installation of parallel generators. Manitoba Hydro will only allow the following two types on installations.

The parallel generators shall have only one main overcurrent sized for the combined sum of the generators and the synchronizing of the generators can be done either at the generator or the approved switchgear.

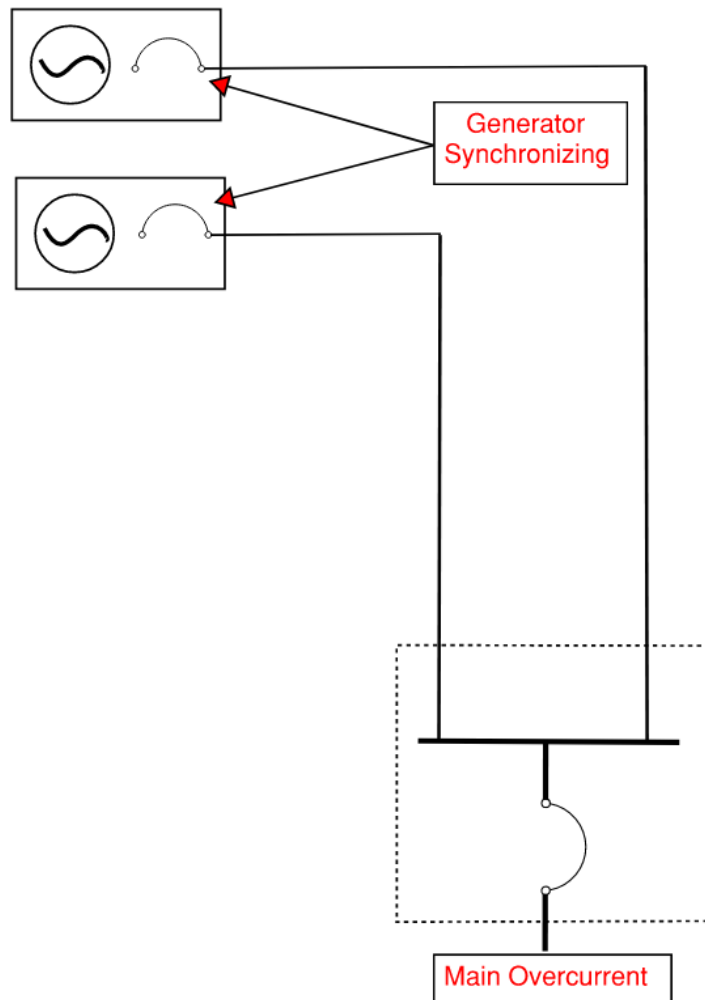


## Informative Note: 28-900 - 1

### Parallel Generators

---

Installation number 1 - Paralleling generators with the synchronizing done at the generators



If the generator synchronizing is being done within the generators, both generators must terminate into a single overcurrent device. The single overcurrent device shall be sized for the combined sum of the generators.

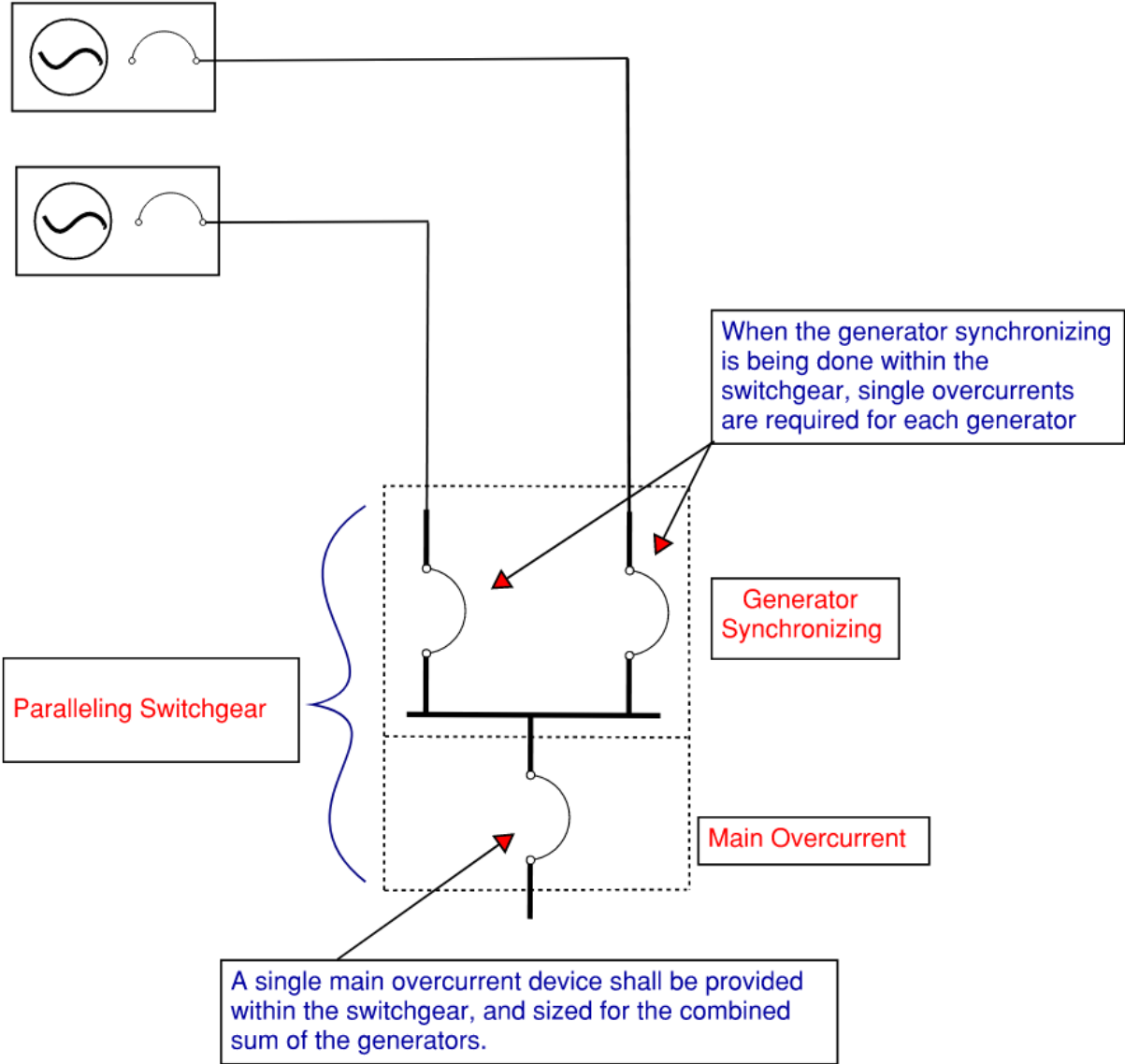
Available in accessible formats upon request.



# Informative Note: 28-900 - 1

## Parallel Generators

Installation number 2 - Paralleling generators with the synchronizing at an approved switchgear.



Available in accessible formats upon request.

