

Silver to Rosser Tap Transmission Project

Proposed Infrastructure

- Potential Entrance Site
- Preferred Route
- Alternative Segment
- Diageo Gimli Distillery

Existing Infrastructure

- Existing ≥ 69 kV Transmission Line

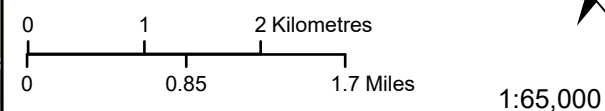
Landbase

- Railway
- Provincial Highway
- Provincial Road
- First Nation
- Provincial Park
- Rural Municipality

Treaty 1 territory and the Métis harvesting area covers the entire map.

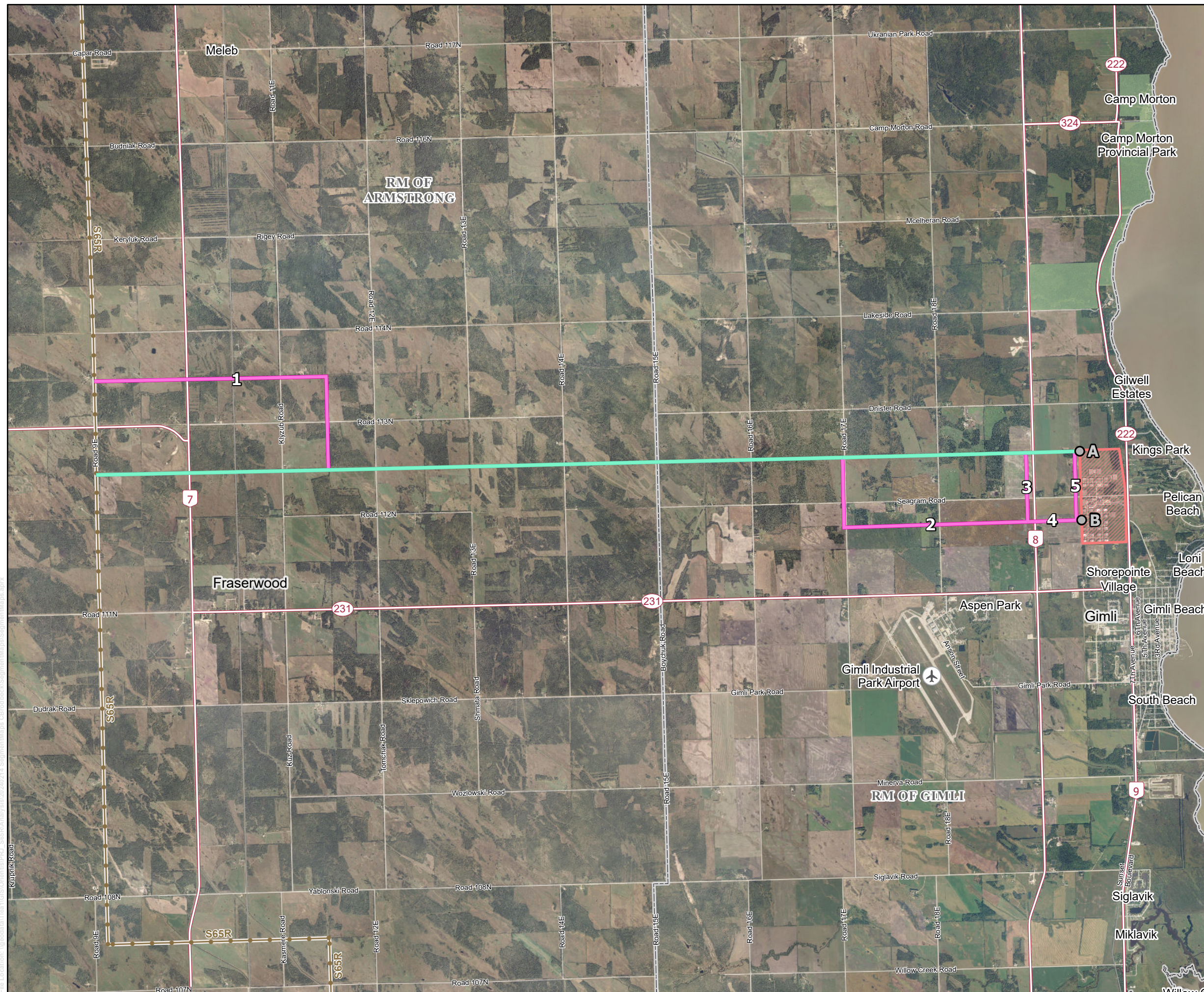
To request accessible formats visit hydro.mb.ca/accessibility.

Coordinate System: UTM Zone 14N NAD83
 Data Source: MBHydro, ProvMB, NRCAN
 Date: February 20, 2024



Preferred Route and Alternative Segments Overview

Draft/Confidential: For Discussion Purposes Only



File Location: \\gdr\data\T1\en\GIS\Carta\PRJ_S65R_Analy\20240214_SegmentMap_C2\roadbase\32\segment\Map_Equipment\Map.pptx