

Imagery: World Imagery: Maxar



Coordinate System: UTM Zone 14N NAD83
 Data Source: MB Hydro, ProvMB, NRCAN
 Date Created: June 03, 2024
 Version: Draft

0 125 250 500
 Metres
 1:10,000

- Land Base**
- Highway
 - Major Road
 - Local Road
 - Railway (Operational)
 - First Nation
 - Parcel Fabric
 - Rural Municipality

- Existing Infrastructure**
- Transmission Line

- Project Infrastructure**
- Preferred Route

Treaty 1 territory and the Métis harvesting area covers the entire map.

Silver to Rosser Tap Transmission Project Preferred Route

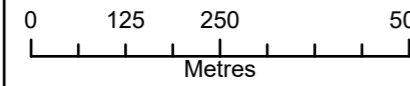
Draft: For Discussion Purposes Only



Imagery: World Imagery: Maxar



Coordinate System: UTM Zone 14N NAD83
 Data Source: MB Hydro, ProvMB, NRCAN
 Date Created: June 03, 2024
 Version: Draft



1:10,000

- Land Base**
- Highway
 - Major Road
 - Local Road
 - Railway (Operational)
 - First Nation
 - Parcel Fabric
 - Rural Municipality

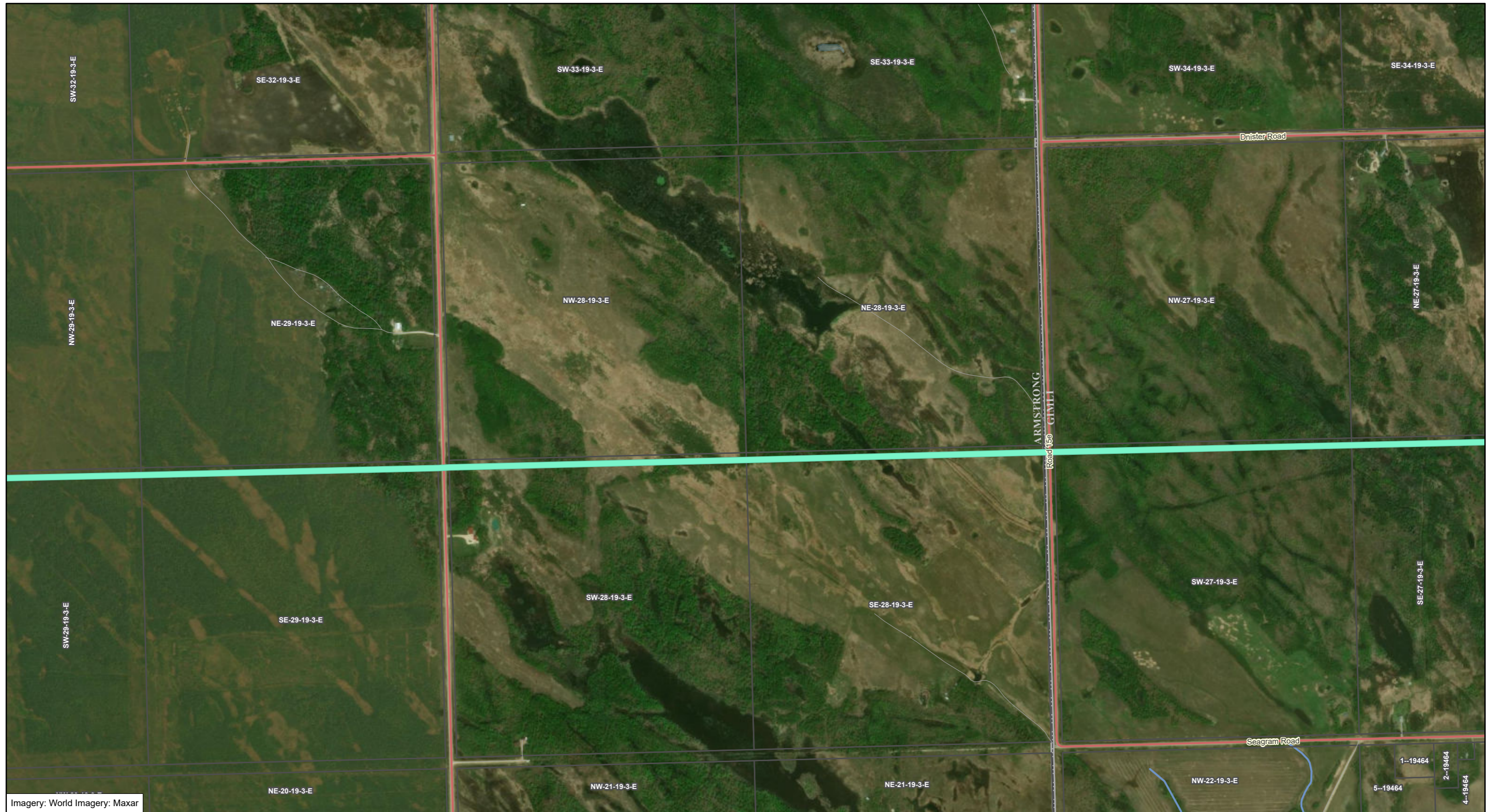
- Existing Infrastructure**
- Transmission Line

- Project Infrastructure**
- Preferred Route

Treaty 1 territory and the Métis harvesting area covers the entire map.

Silver to Rosser Tap Transmission Project Preferred Route

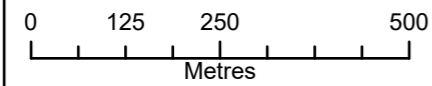
Draft: For Discussion Purposes Only



Imagery: World Imagery: Maxar



Coordinate System: UTM Zone 14N NAD83
 Data Source: MB Hydro, ProvMB, NRCAN
 Date Created: June 03, 2024
 Version: Draft



1:10,000

- Land Base**
- Highway
 - Major Road
 - Local Road
 - Railway (Operational)
 - First Nation
 - Parcel Fabric
 - Rural Municipality

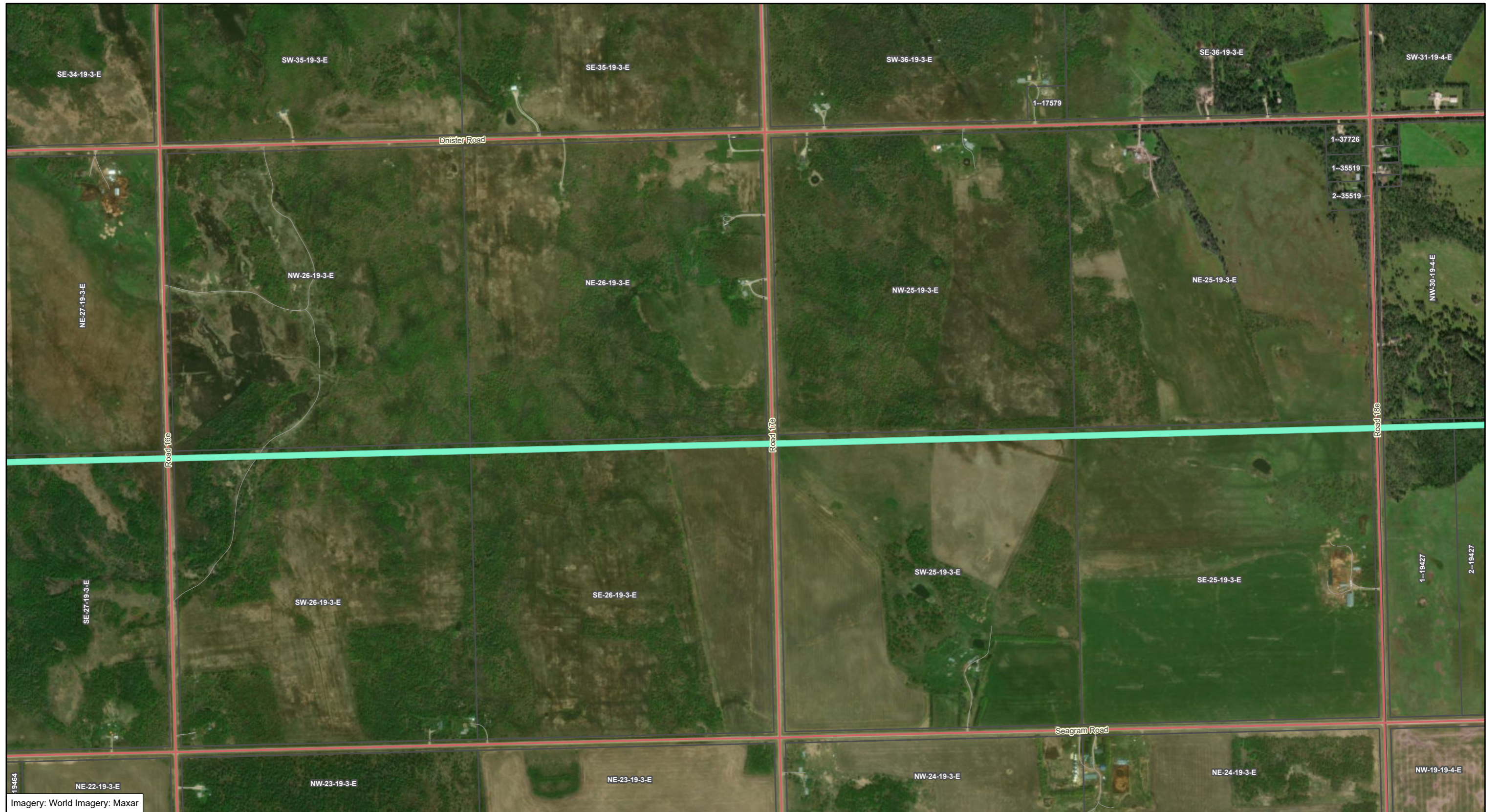
- Existing Infrastructure**
- Transmission Line

- Project Infrastructure**
- Preferred Route

Treaty 1 territory and the Métis harvesting area covers the entire map.

Silver to Rosser Tap Transmission Project Preferred Route

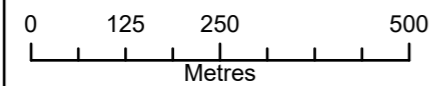
Draft: For Discussion Purposes Only



Imagery: World Imagery: Maxar



Coordinate System: UTM Zone 14N NAD83
 Data Source: MB Hydro, ProvMB, NRCAN
 Date Created: June 03, 2024
 Version: Draft



1:10,000

- Land Base**
- Highway
 - Major Road
 - Local Road
 - Railway (Operational)
 - First Nation
 - Parcel Fabric
 - Rural Municipality

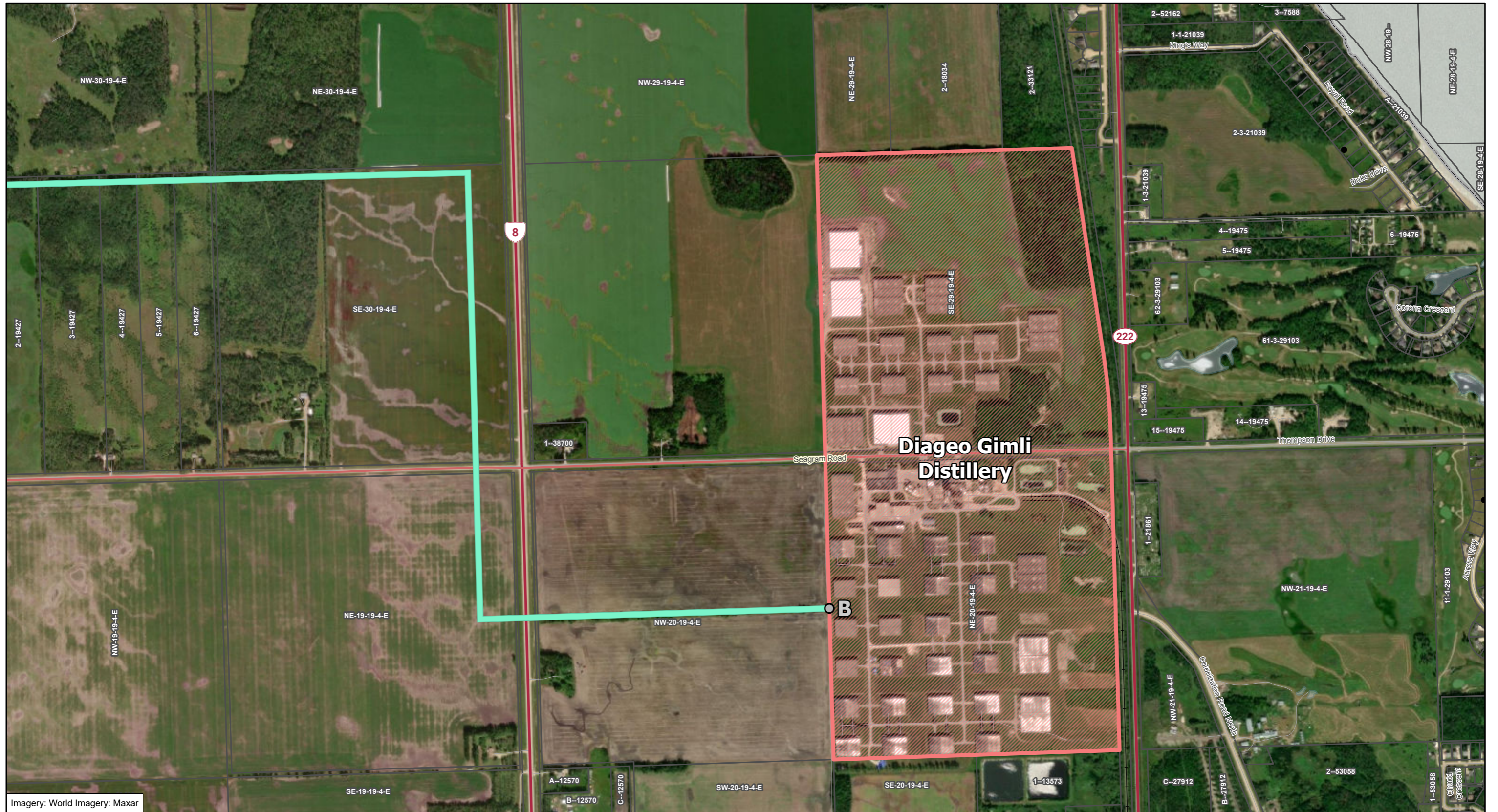
- Existing Infrastructure**
- Transmission Line

- Project Infrastructure**
- Preferred Route

Treaty 1 territory and the Métis harvesting area covers the entire map.

Silver to Rosser Tap Transmission Project Preferred Route

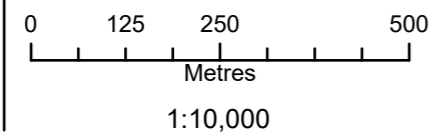
Draft: For Discussion Purposes Only



Imagery: World Imagery: Maxar



Coordinate System: UTM Zone 14N NAD83
 Data Source: MB Hydro, ProvMB, NRCAN
 Date Created: June 03, 2024
 Version: Draft



- Land Base**
- Highway
 - Major Road
 - Local Road
 - Railway (Operational)
 - First Nation
 - Parcel Fabric
 - Rural Municipality

- Existing Infrastructure**
- Transmission Line

- Project Infrastructure**
- Preferred Route
 - Potential Entrance Site
 - Diageo Gimli Distillery

Treaty 1 territory and the Métis harvesting area covers the entire map.

Silver to Rosser Tap Transmission Project Preferred Route

Draft: For Discussion Purposes Only