

Silver to Rosser tap transmission project

Round 1 presentation

March 12, 2024



Meeting outline

Welcome & introductions

Project presentation by Manitoba Hydro

- Project background
- Routing process
- Project and engagement timeline

Questions & answers

About the project

- Proposed 230-kV transmission line located north of Gimli to supply Diageo Canada Inc.'s distillery facility with hydroelectricity
- Line will tap into an existing 230kV line (S65R)
- Class 2 development under the *Environment Act* (Manitoba)

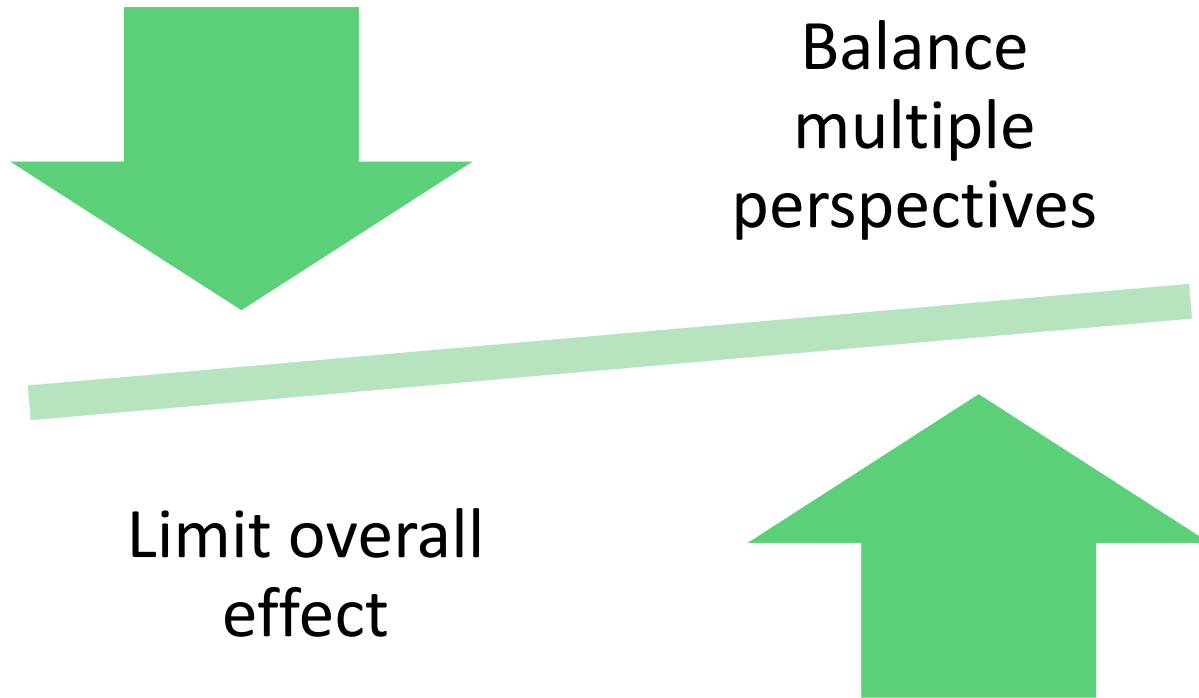


Why is this project needed?

This project is customer driven and will allow the Diageo Gimli distillery the ability to reduce natural gas usage and use more hydroelectricity to power its facility.



Goals of transmission line routing




Transmission line routing and engagement process

- Draw study area

Identify start and end points of line

Draw routes

- Round 1 engagement 

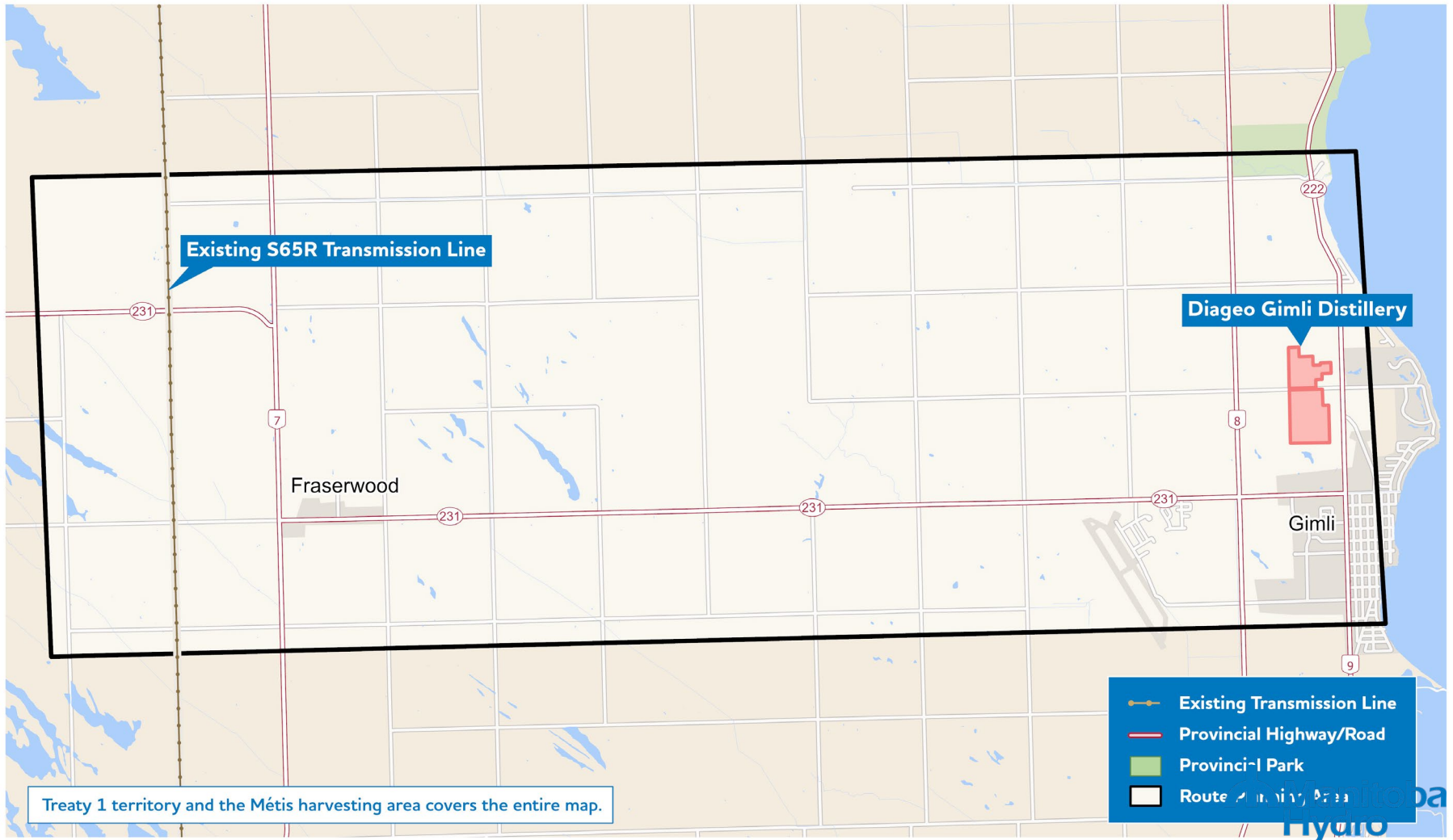
- Compare and evaluate routes

Narrow down options

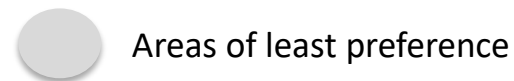
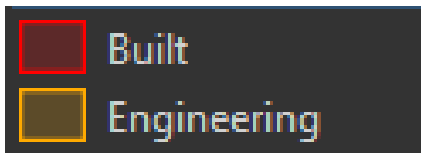
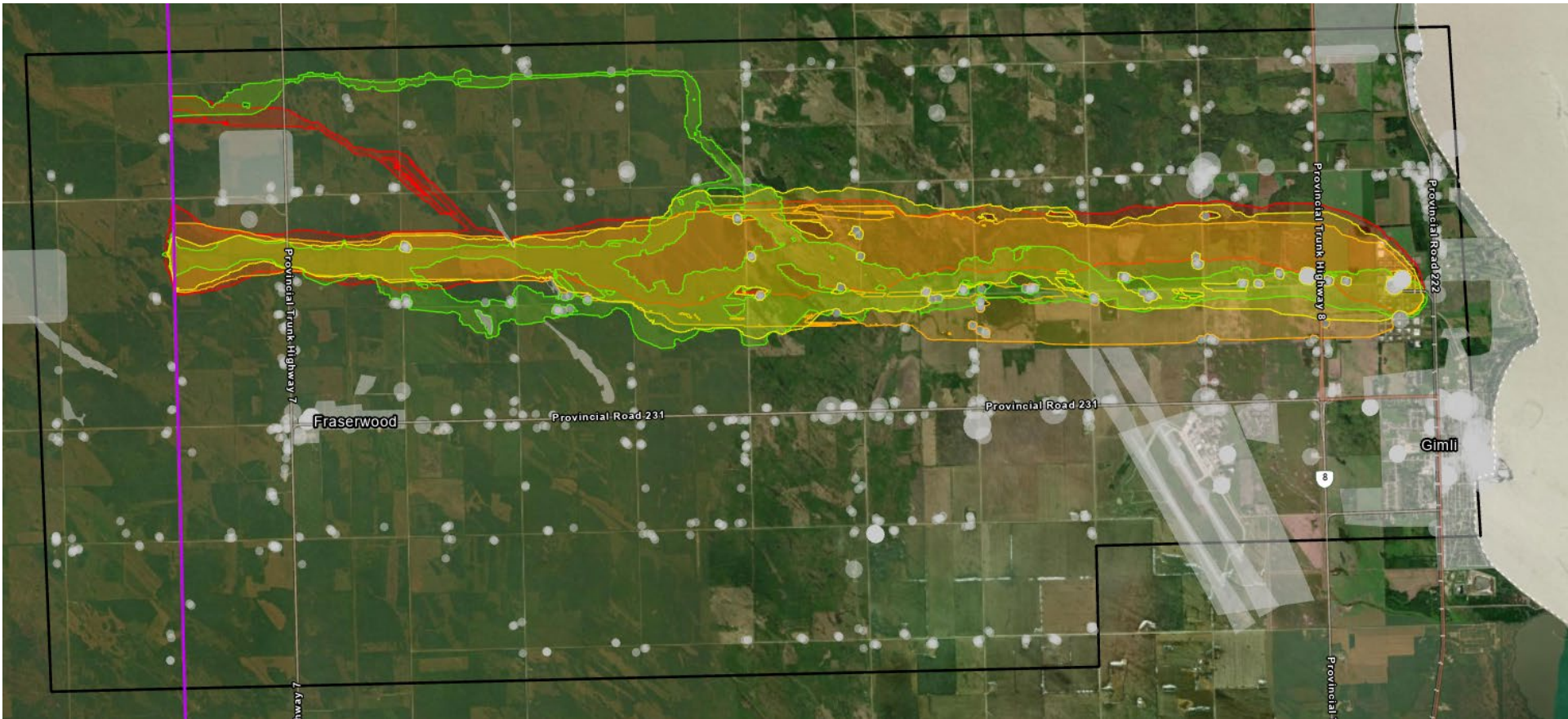
Pick preferred route

- Round 2 engagement

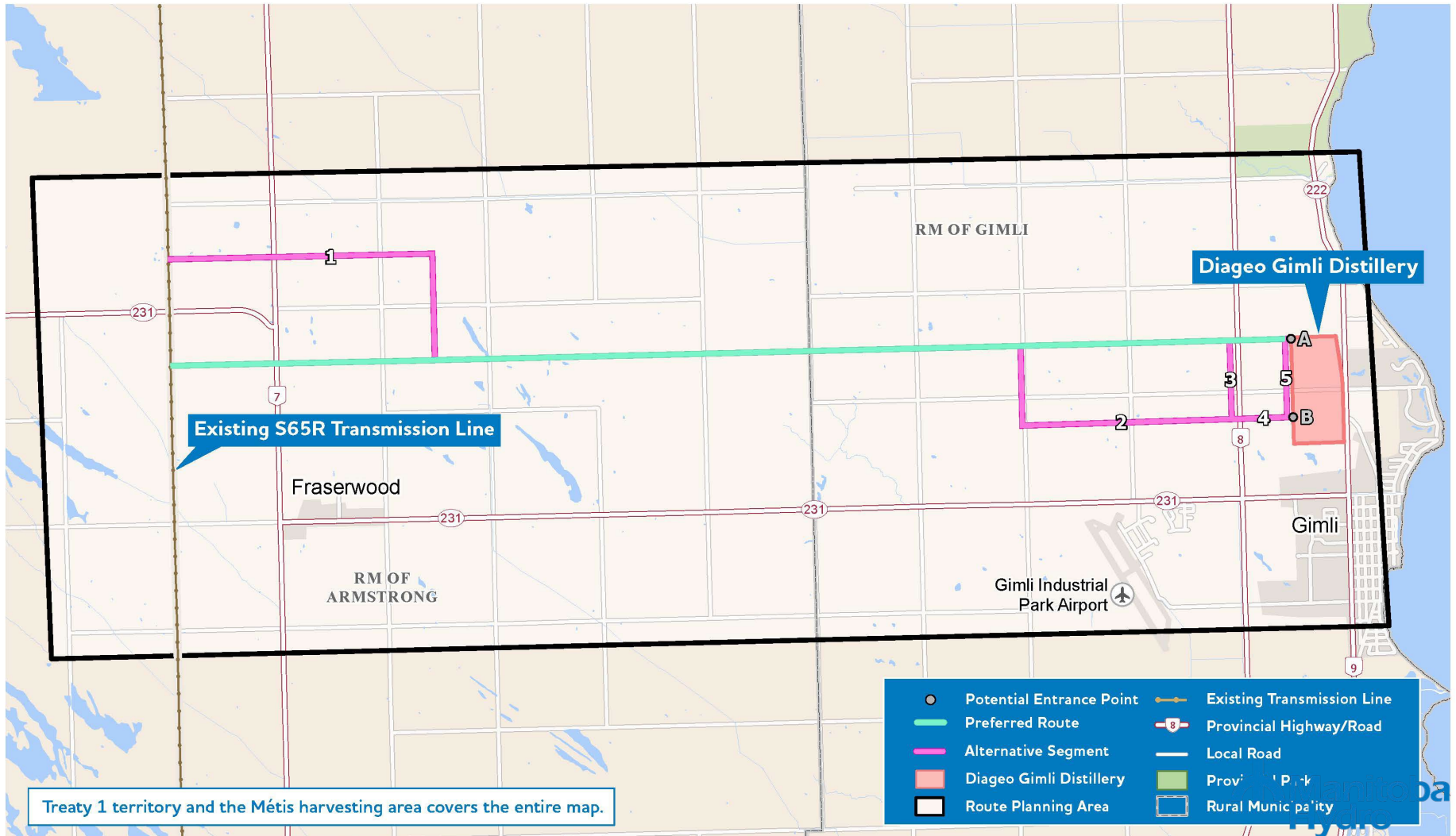
Route planning area



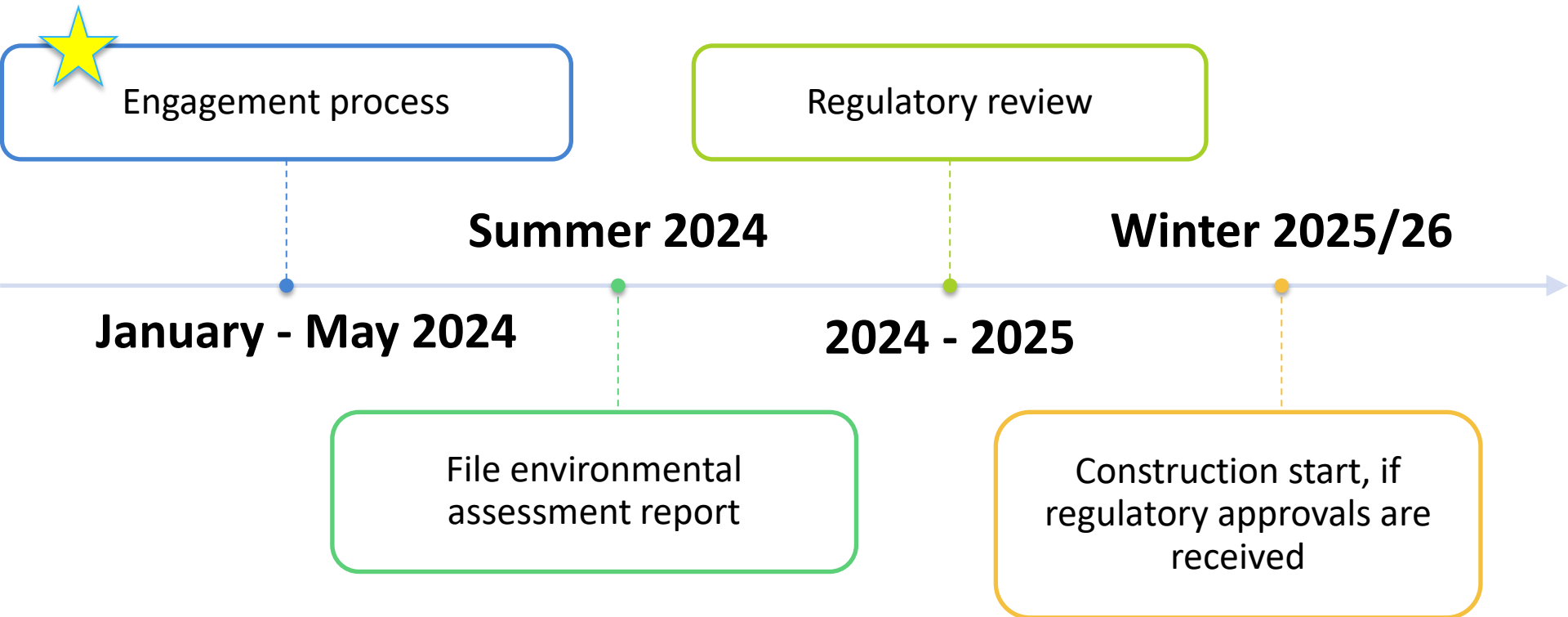
Alternative route corridors



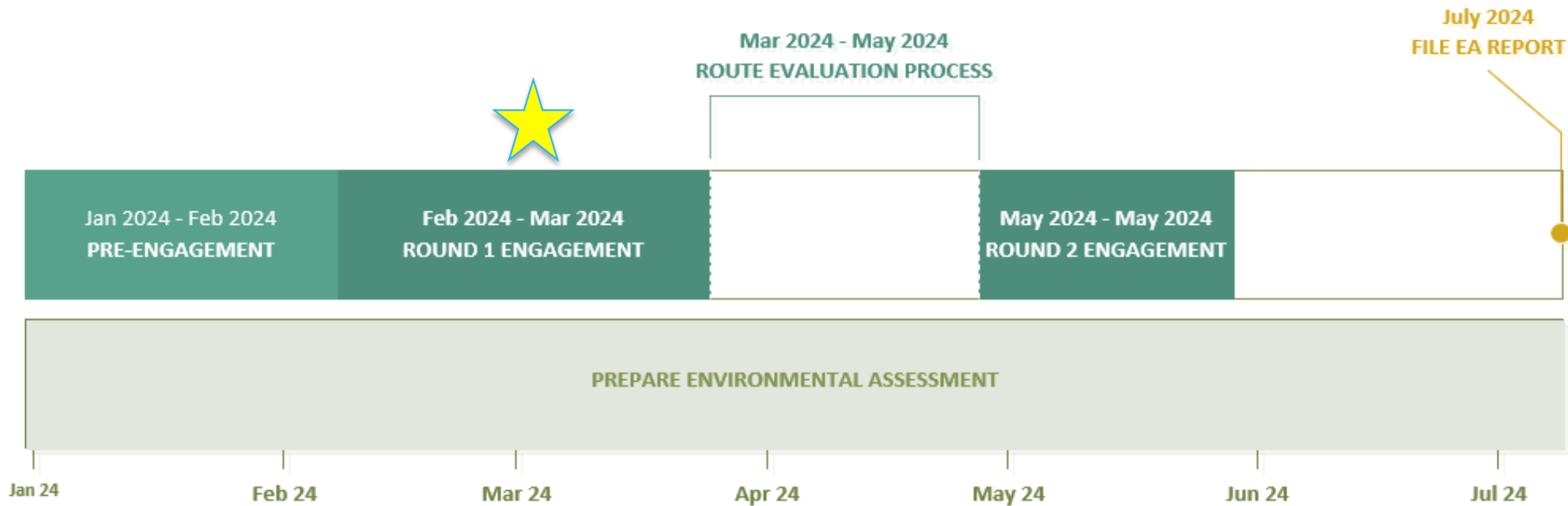
Preferred and alternative routes



Schedule



Engagement timelines*



* Subject to change

Rounds of engagement

Round 1 engagement

Feb – March 2024

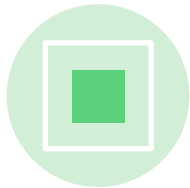
- Introduce the project
- Present preferred route and alternative route segments
- Answer questions
- Identify and document concerns
- Use feedback to inform the route selection process

Round 2 engagement

May 2024

- Present findings from Round 1
- Present the route
- Answer questions
- Identify and document concerns
- Discuss potential effects and possible mitigation measures

How we're engaging



Mail-outs
(postcards, letters)



Radio advertisements



Online survey



Online map &
feedback portal



In-person open
house



Virtual information
sessions

Concerns we've heard so far



Disturbance to
wetlands



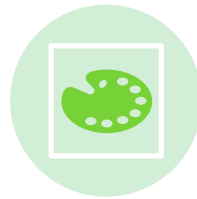
Impacts to wildlife
and habitat



Increase in access



Property values/
compensation



Impacts to
aesthetics



Increase in erosion
and herbicide use



Increase in noise

Thank you

For more project information visit:
www.hydro.mb.ca/silver-rosser-tap

Connect with us:

projects@hydro.mb.ca

1-877-343-1631

Thank you!

Questions?