

# Silver to Rosser tap transmission line

New transmission line

[hydro.mb.ca/silver-rosser-tap](https://hydro.mb.ca/silver-rosser-tap)

# Purpose of the open house

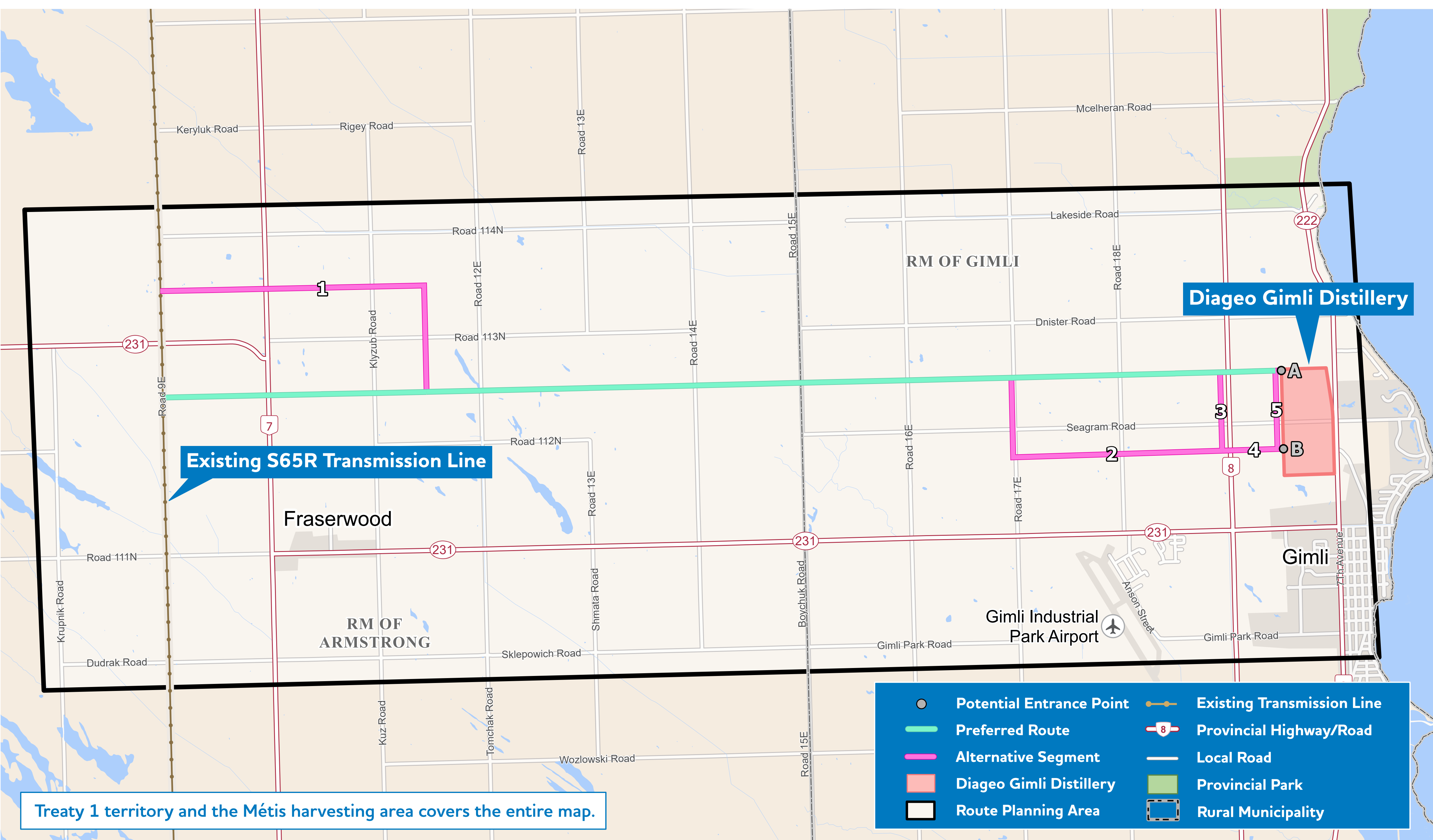
- Share information with you about the Silver to Rosser tap transmission line and environmental assessment process.
- Answer your questions about the line.
- Listen to your feedback.

# What is the challenge we are trying to solve together?

- Manitoba Hydro needs to provide more hydroelectricity to the Diageo Gimli distillery to reduce natural gas usage to power its facility.
- To do so, we need a new 230kV transmission line to connect an existing transmission line (S65R) to Diageo Canada Inc.'s distillery facility in Gimli.
- We want to understand local concerns and interests to help us choose where to place the transmission line.

# New transmission line

- The project will involve construction of a 230kV transmission line that will travel from the existing line (S65R) located west of Highway 7 near Fraserwood, Manitoba, to the Diageo Gimli distillery located north of Gimli.
- This project requires a Class 2 licence under *The Environment Act* (Manitoba).





# Transmission line routing and engagement process

1. Identify start and end points of line
2. Develop a Round 1 preferred route and alternative route segments
3. Round 1 engagement
  - a. Present Round 1 preferred route and alternative route segments
  - b. Answer questions
  - c. Gather local knowledge and concerns to inform the preferred route selection process
4. Compare and analyze route options
5. Determine a Round 2 preferred route
6. Round 2 engagement
  - a. Present the findings of Round 1
  - b. Present the Round 2 preferred route
  - c. Work to address outstanding concerns
  - d. Discuss potential effects and possible mitigation measures
7. Determine final preferred route and submit environmental assessment report

# What is an environmental assessment?

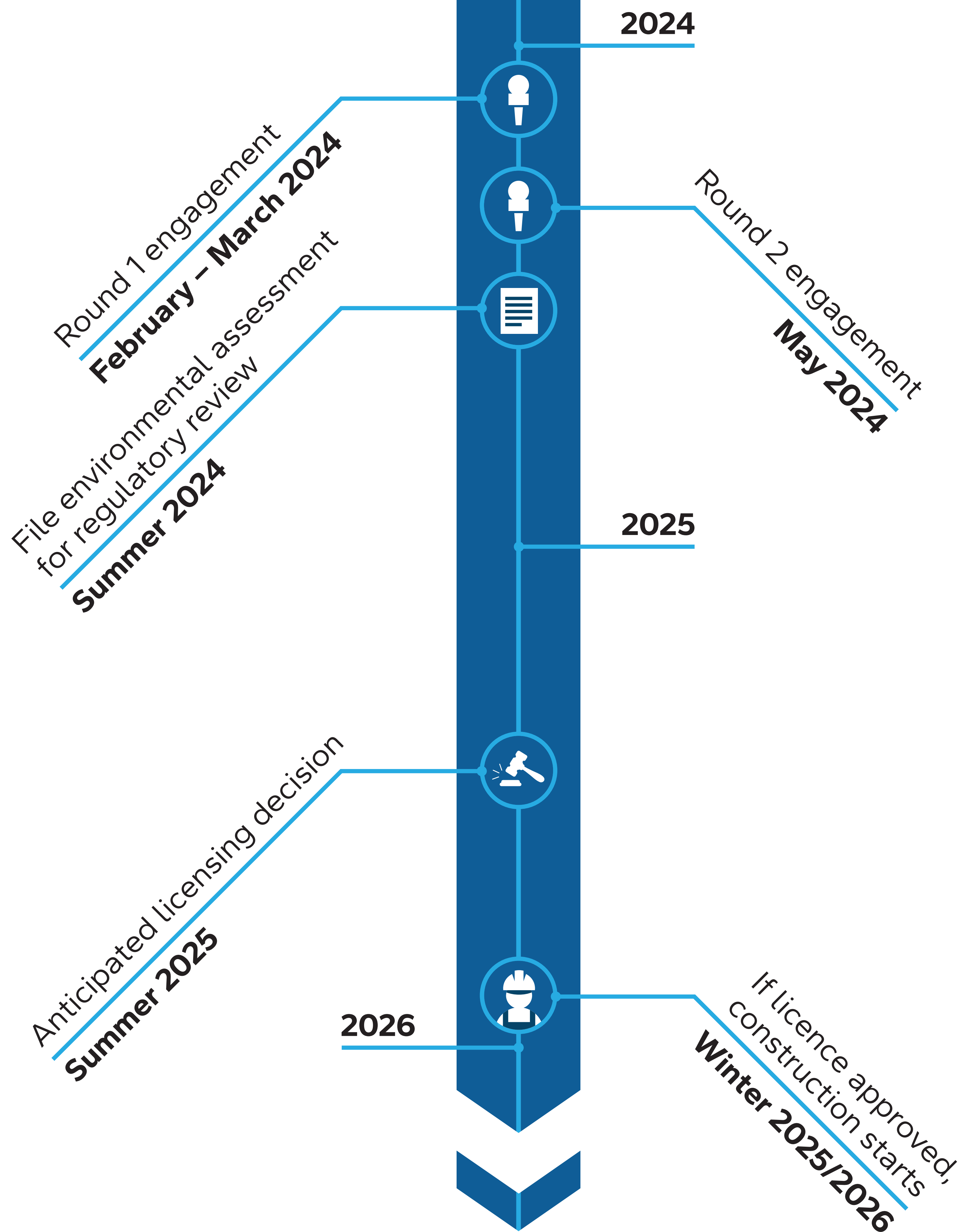
An environmental assessment is a multi-disciplinary evaluation of a project that examines what potential effects the project might have on the human and natural environment and how to minimize potential effects.

# What is an Environment Act License?

- Under *The Environment Act* (Manitoba), Manitoba Hydro is required to submit an application for a Class 2 Licence to construct the project.
- To do this, Manitoba Hydro will prepare an Environment Act Proposal for Manitoba Environment and Climate Change, which will include an environmental assessment report.
- The Environmental Approvals Branch reviews the application and determines whether a licence will be approved.

# Schedule

## Silver to Rosser Tap Transmission Line Project Timeline



# Connect with us

Our project team wants to hear from you.

Send your questions to **projects@hydro.mb.ca** or call **1-877-343-1631**

[hydro.mb.ca/silver-rosser-tap](https://hydro.mb.ca/silver-rosser-tap)